



27297

2210 Series

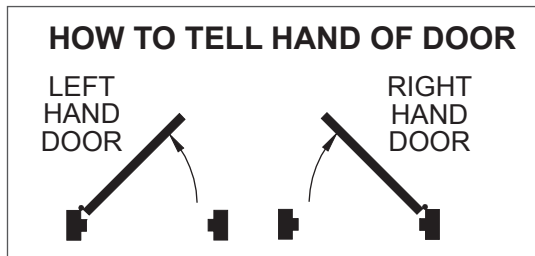
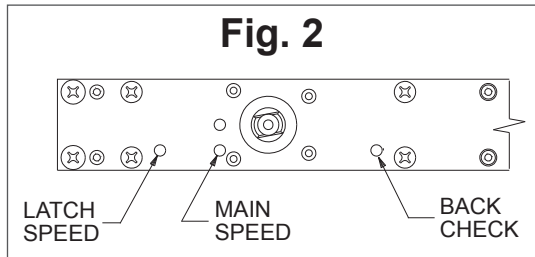
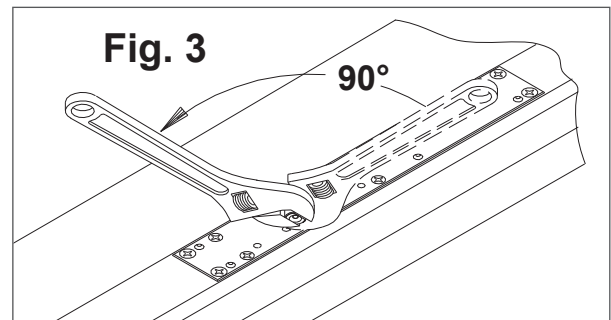
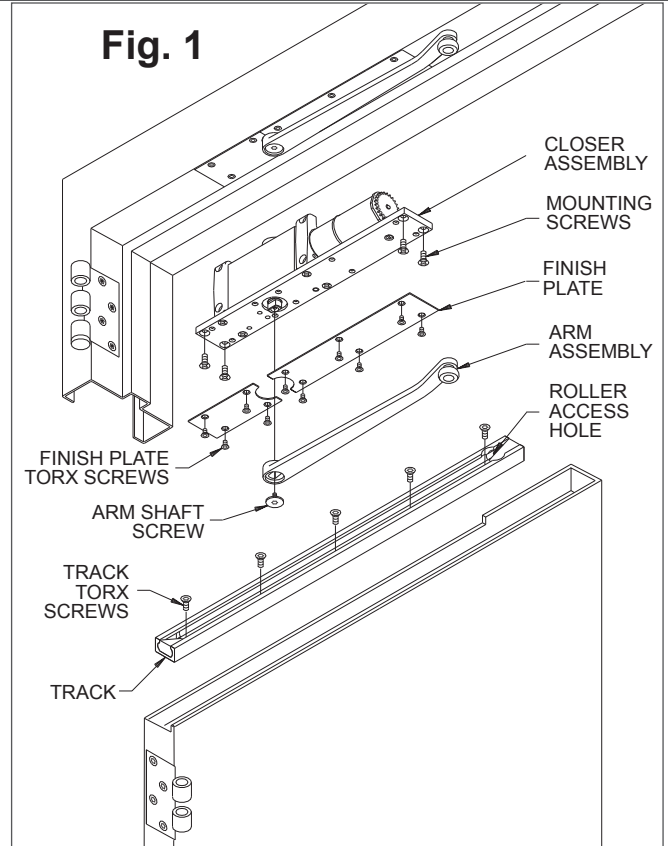


LCN®

Door Closers

Installation Instructions

- 1a Make sure hand of closer matches hand of door. Remove finish plates. Hand of closer is printed on the mounting plate label. Hand of closer cannot be reversed. See diagram above to determine hand of door.
- 1b Prepare and mortise door & frame per template on pg. 4.
- 1c Install closer in prepared headframe, as shown in Fig. 1, with spring tube pointing away from hinge. Fasten mounting plate to jamb with 1/4 - 20 x 5/8 PHMS provided.
- 1d Install track in door. Roller access hole must be toward latch edge of door, as shown in Fig. 1. Fasten with 1/4 - 20 x 1/2 TORX MS provided.
- 1e Connect arm assembly to track by placing plastic roller at end of arm into the roller access hole in track. See Fig. 1. Let arm assembly rest on top of installed track.
- 1f To attach arm to closer:
 - a. Open door out of working area.
 - b. With a 3/32" hex wrench, turn latch & main speed regulating screws all the way in (clockwise). See Fig. 2. DO NOT FORCE SCREWS.
 - c. Using an adjustable wrench, rotate door closer shaft approximately 90°. See Fig. 3. (R.H. - clockwise / L.H. - counterclockwise).



Customer Service
 1-877-671-7011 www.allegion.com/us



- d. With closer shaft now stationary, move the end of the arm to shaft of closer. Slowly move door so hole in arm lines up correctly with closer shaft. Push arm up into position and insert arm shaft screw, as shown in Fig. 4.

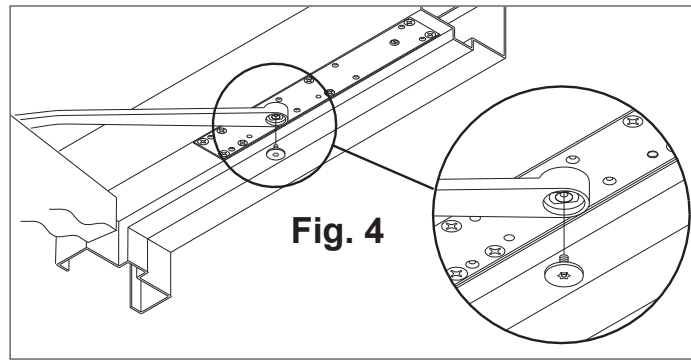


Fig. 4

1g TO REGULATE CLOSING SPEED & BACKCHECK:

See Fig. 5 below. Use a 3/32" hex wrench to re-adjust MAIN & LATCH speed screws (closed in step 7A). Turn both MAIN & LATCH speed screws 2 full turns counterclockwise. Open door and observe closing cycle. A normal closing time from a 90° position is 5 to 7 seconds, equally divided between MAIN & LATCH speeds. If further adjustment is required, turn regulating screws clockwise to SLOW door speed / counterclockwise to INCREASE door speed. BACKCHECK is a feature that slows the speed of door at approximately 70°. To INCREASE force turn BACKCHECK screw clockwise. To REDUCE force turn BACKCHECK screw counterclockwise. **Do not use an abrupt BACKCHECK setting, nor expect closer to act as a door stop!**

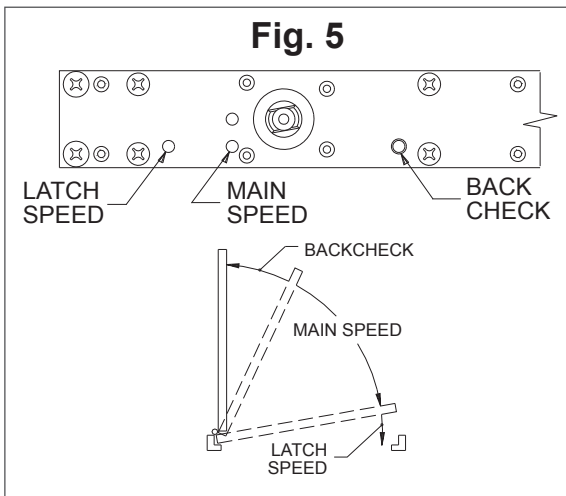


Fig. 5

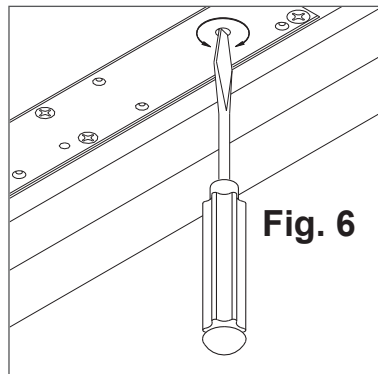


Fig. 6

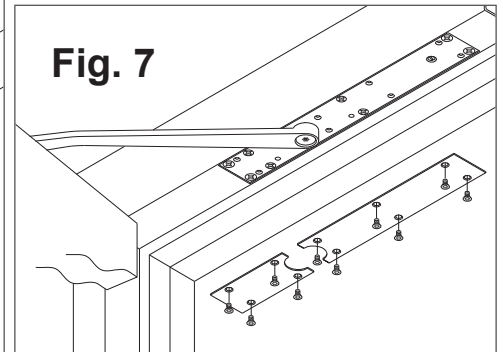


Fig. 7

1h CLOSING POWER ADJUSTMENT:

Depending on width of door, the 2210 has been ordered as one of three sizes: 2213, 2214 or 2215. Determine closer size from either label on box or UL label on mounting plate. Adjustment can be made with a flat head screwdriver (see Fig. 6). Adjustment range for each size is as follows:

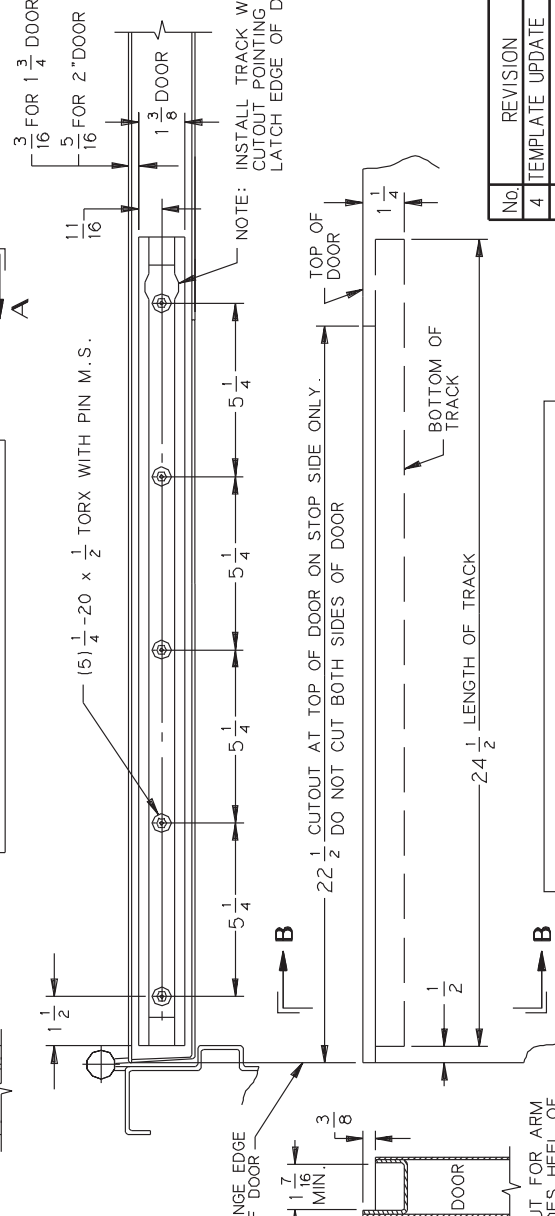
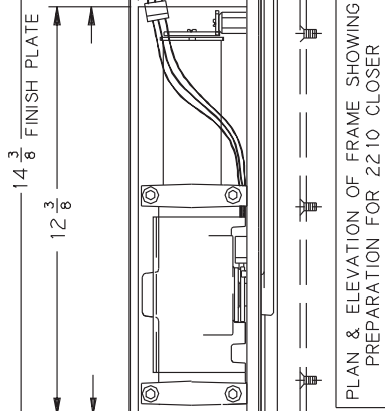
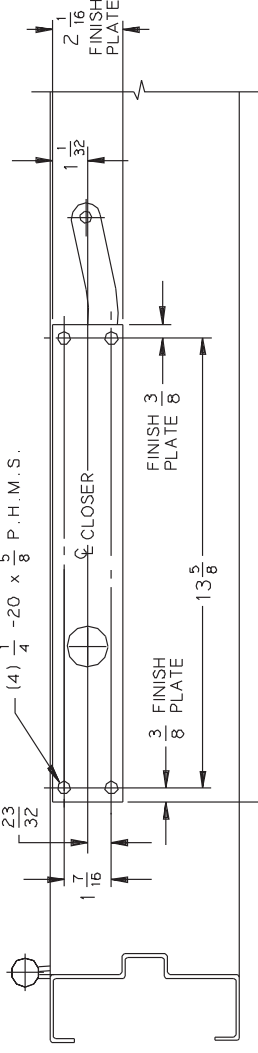
- 2213: Closer is shipped at minimum closing power. If MORE closing Power is required, turn adjusting screw counterclockwise, but not more than 36 full turns. Do not turn adjusting screw clockwise.
- 2214: If MORE power is required, turn adjusting screw counterclockwise, but not more than 18 full turns. If LESS power is required, turn adjusting screw clockwise, but not more than 18 full turns. Do not turn adjusting screw more than 18 full turns in either direction.
- 2215: Closer is shipped at maximum closing power. If LESS power required, turn adjusting screw clockwise, but not more than 36 full turns. Do not turn adjusting screw counterclockwise.

- 1i Once proper operation has been verified, secure finish plates with No. 10-24 x 3/8" Torx security screws, as shown in Fig. 7.

2210/2210DPS - THRU 180° OPENING
 AUXILIARY STOP RECOMMENDED
 LEFT HAND DOOR AND CLOSER SHOWN, RIGHT HAND OPPOSITE **6/96**

GENERAL NOTES -

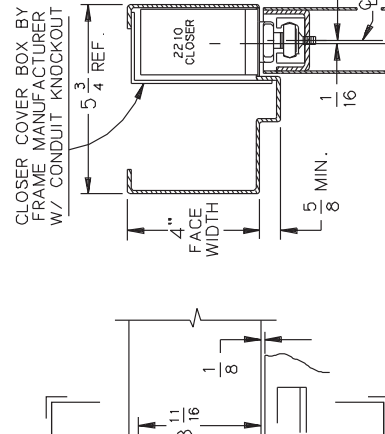
- 1 - FOR 180° OPENINGS, MAXIMUM ALLOWABLE BUTT SIZE IS 4 1/2" x 4 1/2" OPEN WIDTH.
- 2 - MINIMUM STOP THICKNESS 5/8".
- 3 - 1/8" DOOR TO SOFFIT CLEARANCE REQUIRED.
- 4 - RECOMMEND CASED FRAME AND APPLIED STOP FOR 1 3/4" DOOR, MOUNT APPLIED STOP WITH TORX WITH PIN MACHINE SCREWS.
- 5 - THIS TEMPLATE SHOWS A 4" FACE WIDTH FRAME HEAD WITH A 2" AND 1 3/4" DOOR THICKNESS. ANY OTHER DEVIATION CONSULT FACTORY.
- 6 - REINFORCING PER ANSI/SDI-100 RECOMMENDED FOR HOLLOW METAL DOOR AND FRAMES.



CUTOUT FOR ARM INCLUDES HEEL OF DOOR AS SHOWN

PLAN & ELEVATION OF TOP OF DOOR SHOWING PREPARATION FOR CLOSER TRACK

AUXILIARY STOP RECOMMENDED



SECTION A - A

INCH	1/16	1/8	3/16	1/4	5/16	3/8	7/8	1	1 1/16	1 1/8	1 1/4	1 3/16	1 3/8	1 1/2	1 5/8	1 3/4	1 7/8	2	2 1/8	2 1/4	2 3/8	2 1/2	2 5/8	3	3 1/4	3 1/2	3 3/4	4	4 1/4	4 1/2	4 3/4	5	5 1/4	5 1/2	5 3/4	6	6 1/4	6 1/2	6 3/4	7	7 1/4	7 1/2	7 3/4	8	8 1/4	8 1/2	8 3/4	9	9 1/4	9 1/2	9 3/4	10	10 1/4	10 1/2	10 3/4	11	11 1/4	11 1/2	11 3/4	12	12 1/4	12 1/2	12 3/4	13	13 1/4	13 1/2	13 3/4	14	14 1/4	14 1/2	14 3/4	15	15 1/4	15 1/2	15 3/4	16	16 1/4	16 1/2	16 3/4	17	17 1/4	17 1/2	17 3/4	18	18 1/4	18 1/2	18 3/4	19	19 1/4	19 1/2	19 3/4	20	20 1/4	20 1/2	20 3/4	21	21 1/4	21 1/2	21 3/4	22	22 1/4	22 1/2	22 3/4	23	23 1/4	23 1/2	23 3/4	24	24 1/4	24 1/2	24 3/4	25	25 1/4	25 1/2	25 3/4	26	26 1/4	26 1/2	26 3/4	27	27 1/4	27 1/2	27 3/4	28	28 1/4	28 1/2	28 3/4	29	29 1/4	29 1/2	29 3/4	30	30 1/4	30 1/2	30 3/4	31	31 1/4	31 1/2	31 3/4	32	32 1/4	32 1/2	32 3/4	33	33 1/4	33 1/2	33 3/4	34	34 1/4	34 1/2	34 3/4	35	35 1/4	35 1/2	35 3/4	36	36 1/4	36 1/2	36 3/4	37	37 1/4	37 1/2	37 3/4	38	38 1/4	38 1/2	38 3/4	39	39 1/4	39 1/2	39 3/4	40	40 1/4	40 1/2	40 3/4	41	41 1/4	41 1/2	41 3/4	42	42 1/4	42 1/2	42 3/4	43	43 1/4	43 1/2	43 3/4	44	44 1/4	44 1/2	44 3/4	45	45 1/4	45 1/2	45 3/4	46	46 1/4	46 1/2	46 3/4	47	47 1/4	47 1/2	47 3/4	48	48 1/4	48 1/2	48 3/4	49	49 1/4	49 1/2	49 3/4	50	50 1/4	50 1/2	50 3/4	51	51 1/4	51 1/2	51 3/4	52	52 1/4	52 1/2	52 3/4	53	53 1/4	53 1/2	53 3/4	54	54 1/4	54 1/2	54 3/4	55	55 1/4	55 1/2	55 3/4	56	56 1/4	56 1/2	56 3/4	57	57 1/4	57 1/2	57 3/4	58	58 1/4	58 1/2	58 3/4	59	59 1/4	59 1/2	59 3/4	60	60 1/4	60 1/2	60 3/4	61	61 1/4	61 1/2	61 3/4	62	62 1/4	62 1/2	62 3/4	63	63 1/4	63 1/2	63 3/4	64	64 1/4	64 1/2	64 3/4	65	65 1/4	65 1/2	65 3/4	66	66 1/4	66 1/2	66 3/4	67	67 1/4	67 1/2	67 3/4	68	68 1/4	68 1/2	68 3/4	69	69 1/4	69 1/2	69 3/4	70	70 1/4	70 1/2	70 3/4	71	71 1/4	71 1/2	71 3/4	72	72 1/4	72 1/2	72 3/4	73	73 1/4	73 1/2	73 3/4	74	74 1/4	74 1/2	74 3/4	75	75 1/4	75 1/2	75 3/4	76	76 1/4	76 1/2	76 3/4	77	77 1/4	77 1/2	77 3/4	78	78 1/4	78 1/2	78 3/4	79	79 1/4	79 1/2	79 3/4	80	80 1/4	80 1/2	80 3/4	81	81 1/4	81 1/2	81 3/4	82	82 1/4	82 1/2	82 3/4	83	83 1/4	83 1/2	83 3/4	84	84 1/4	84 1/2	84 3/4	85	85 1/4	85 1/2	85 3/4	86	86 1/4	86 1/2	86 3/4	87	87 1/4	87 1/2	87 3/4	88	88 1/4	88 1/2	88 3/4	89	89 1/4	89 1/2	89 3/4	90	90 1/4	90 1/2	90 3/4
M.M.	2	3	5	6	8	10	11	13	16	17	18	25	26	32	37	38	45	51	52	94	102	114	133	135	146	314	346	365	572	622																																																																																																																																																																																																																																																																																																																																																									

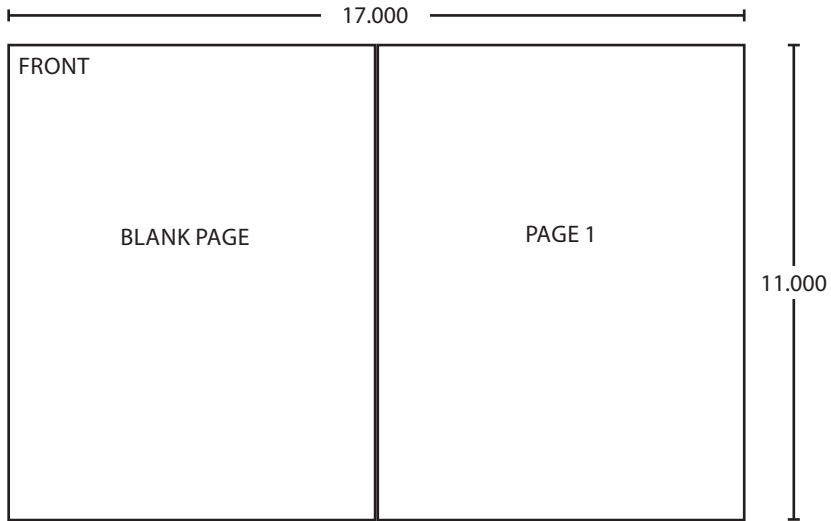
APP BY JEJ 6/96
 DO NOT SCALE

OVERHEAD CONCEALED CLOSER WITH CONCEALED ARM
 (WITH OR WITHOUT DOOR POSITION SWITCH)

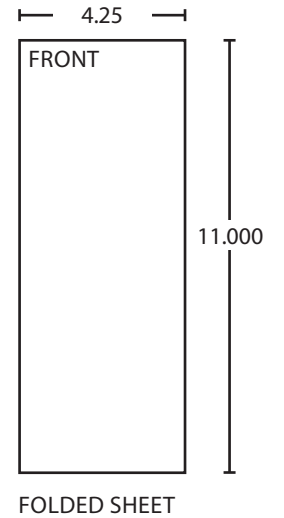
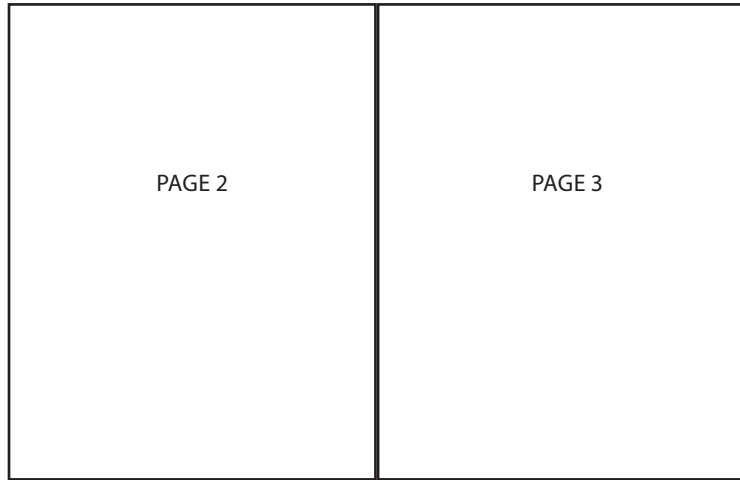
2210/2210DPS

No.	REVISION	BY	DATE
4	TEMPLATE UPDATE	JEJ	6/96

SECTION B - B



BEGINNING SHEET



Additional Notes:
1. None

Revision History						Revision Description: F > Revised artwork							
F	G	H	J	K	L								
xxxxx													
Material White Paper						Edited By D. Myers		Approved By M. Sasso		EC Number xxxxx	Release Date 03-13-14		
Notes 1. printed two sides 2. printed black 3. tolerance ± .13 4. printed in country may vary 5. drawings not to scale						Title 2210 Series Instruction Sheet							
						Creation Date 11-15-08		Number 27297			Revision F		
						Created By N/A		Activity 3899 Hancock Expwy Security, CO 80911		© Allegion 2014			
						Software: InDesign CS6							